



V. San Felice 13 - 10092 Beinasco (TO)
Tel. 011.349.83.43 - 011.349.31.50

WWW.GSIPERIFERICHE.IT
E-mail : info@gsiperiferiche.it



Heat Seal Machines



TS 3M

TS 3M

| | | |
|----------|------------------------|--------------------------|
| I | Dimensione piastra | 50x40 cm |
| | Tensione alimentazione | 230 V monofase |
| | Potenza max. | KW 2,2 |
| | Consumo | KW/h 1,0 |
| | Temperatura | 50°-305° C |
| | Tempo regolabile | 0-999 sec. |
| | Pressione | 0-600 gr/cm ² |
| | Peso netto | Kg 67 |

Pressa a caldo a funzionamento manuale con apertura laterale. Piastra termica superiore basculante per ottenere una pressione costante tra le due piastre. Regolazione elettronica del tempo e temperatura. La piastra inferiore è intercambiabile. Possibilità di accessorio per berretti in opzione.

| | | |
|-----------|------------------------|--------------------------|
| UK | Dimension of the plate | 50x40 cm |
| | Current | 230 V mon. |
| | Power consumption | KW 2,2 |
| | Power consumption/h | KW/h 1,0 |
| | Temperature | 50°-305° C |
| | Time regulable | 0-999 sec. |
| | Pressure | 0-600 gr/cm ² |
| | Net weight | Kg 67 |

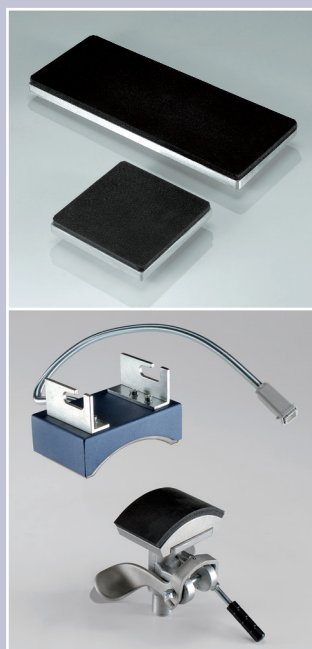
Manual heat press with lateral opening. The top plate is not fixed in a rigid manner to ensure an homogenous pressure between the upper plate and the bottom plate. Electronic time and temperature regulation. Exchangeable under plate with rapid screw fitting. Suitable for any type of application. Possibility to have the cap accessory as extra option.

| | | |
|----------|-----------------|--------------------------|
| D | Plattengroesse | 50x40 cm |
| | Spannung | 230 V mon. |
| | Verbrauch | KW 2,2 |
| | Verbrauch/h | KW/h 1,0 |
| | Temperatur | 50°-305° C |
| | Zeiteinstellung | 0-999 sec. |
| | Anpressdruck | 0-600 gr/cm ² |
| | Gewicht netto | Kg 67 |

Manuelle Thermopresse mit neuem Hebelsystem. Freihängendes Oberplatte für eine immer homogene Druckleistung. Einfache Druckregulierung auf dem Haupthebel. Geeignet zur Applikation jeder Art Etiketten. Zubehör für Kappendruck. Seitlicher Öffnung.

| | | |
|----------|------------------------|--------------------------|
| F | Dimension de la plaque | 50x40 cm |
| | Voltage | 230 V mon. |
| | Consommation totale | KW 2,2 |
| | Consommation totale/h | KW/h 1,0 |
| | Température | 50°-305° C |
| | Régulation du temps | 0-999 sec. |
| | Pression | 0-600 gr/cm ² |
| | Poids net | Kg 67 |

Presse à chaud manuelle. Plaque supérieure basculante qui permet d'avoir une pression constante. Régulation électronique du temps et de la température. La plaque inférieure est interchangeable. Adapte pour l'application de tous types d'étiquettes à chaud. Ouverture laterale. Possibilité d'avoir l'accessoire pour les casquettes en options.



I dati e le caratteristiche tecniche sono puramente indicativi e soggetti a variazioni senza obbligo di preavviso.

All data and technical features are purely indicative and subject to changes without prior notice.

G.S.I. PERIFERICHE
GRAFICHE