

## Heat Seal Machines



**TMH 28/29**

# TMH 28/29

<b>I</b>	Dimensione piastra	<b>TMH 28</b> 38x38 cm	<b>TMH 29</b> 45x38 cm
	Tensione alimentazione	230 V monofase	230 V monofase
	Potenza max.	KW 1,7	KW 2,0
	Consumo	KW/h 0,9	KW/h 1,1
	Temperatura	50°-305° C	50°-305° C
	Tempo regolabile	0-999 sec.	0-999 sec.
	Pressione	0-600 gr/cm <sup>2</sup>	0-600 gr/cm <sup>2</sup>
	Peso netto	Kg 32 / Kg 35,5	Kg 34 / Kg 37,5

Pressa a caldo a funzionamento manuale.  
Piastra termica superiore basculante per ottenere una pressione costante tra le due piastre.  
Regolazione elettronica del tempo e temperatura.  
La piastra inferiore è intercambiabile.

<b>D</b>	Plattengroesse	<b>TMH 28</b> 38x38 cm	<b>TMH 29</b> 45x38 cm
	Spannung	230 V mon.	230 V mon.
	Verbrauch	KW 1,7	KW 2,0
	Verbrauch/h	KW/h 0,9	KW/h 1,1
	Temperatur	50°-305° C	50°-305° C
	Zeiteinstellung	0-999 sec.	0-999 sec.
	Anpressdruck	0-600 gr/cm <sup>2</sup>	0-600 gr/cm <sup>2</sup>
	Gewicht netto	Kg 32 / Kg 35,5	Kg 34 / Kg 37,5

Manuelle Thermopresse mit neuem Hebelsystem.  
Freihängendes Oberplatte für eine immer homogene Druckleistung.  
Einfache Druckregulierung auf dem Haupthebel.

<b>UK</b>	Dimension of the plate	<b>TMH 28</b> 38x38 cm	<b>TMH 29</b> 45x38 cm
	Current	230 V mon.	230 V mon.
	Power consumption	KW 1,7	KW 2,0
	Power consumption/h	KW/h 0,9	KW/h 1,1
	Temperature	50°-305° C	50°-305° C
	Time regulable	0-999 sec.	0-999 sec.
	Pressure	0-600 gr/cm <sup>2</sup>	0-600 gr/cm <sup>2</sup>
	Net weight	Kg 32 / Kg 35,5	Kg 34 / Kg 37,5

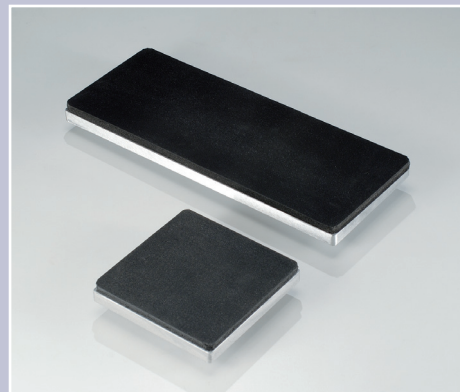
Manual heat press.  
The top plate is not fixed in a rigid manner to ensure an homogeneous pressure between the upper plate and the bottom plate.  
Electronic time and temperature regulation.  
The bottom plate is interchangeable.

<b>F</b>	Dimension de la plaque	<b>TMH 28</b> 38x38 cm	<b>TMH 29</b> 45x38 cm
	Voltage	230 V mon.	230 V mon.
	Consommation totale	KW 1,7	KW 2,0
	Consommation/h	KW/h 0,9	KW/h 1,1
	Température	50°-305° C	50°-305° C
	Régulation du temps	0-999 sec.	0-999 sec.
	Pression	0-600 gr/cm <sup>2</sup>	0-600 gr/cm <sup>2</sup>
	Poids net	Kg 32 / Kg 35,5	Kg 34 / Kg 37,5

Presse à chaud manuelle. Plaque supérieure basculante qui permet d'avoir une pression constante.  
Régulation électronique du temps et de la température.  
La plaque inférieure est interchangeable.

I dati e le caratteristiche tecniche sono puramente indicativi e soggetti a variazioni senza obbligo di preavviso.

*All data and technical features are purely indicative and subject to changes without prior notice.*



**G.S. PERIFERICHE**  
GRAFICHE